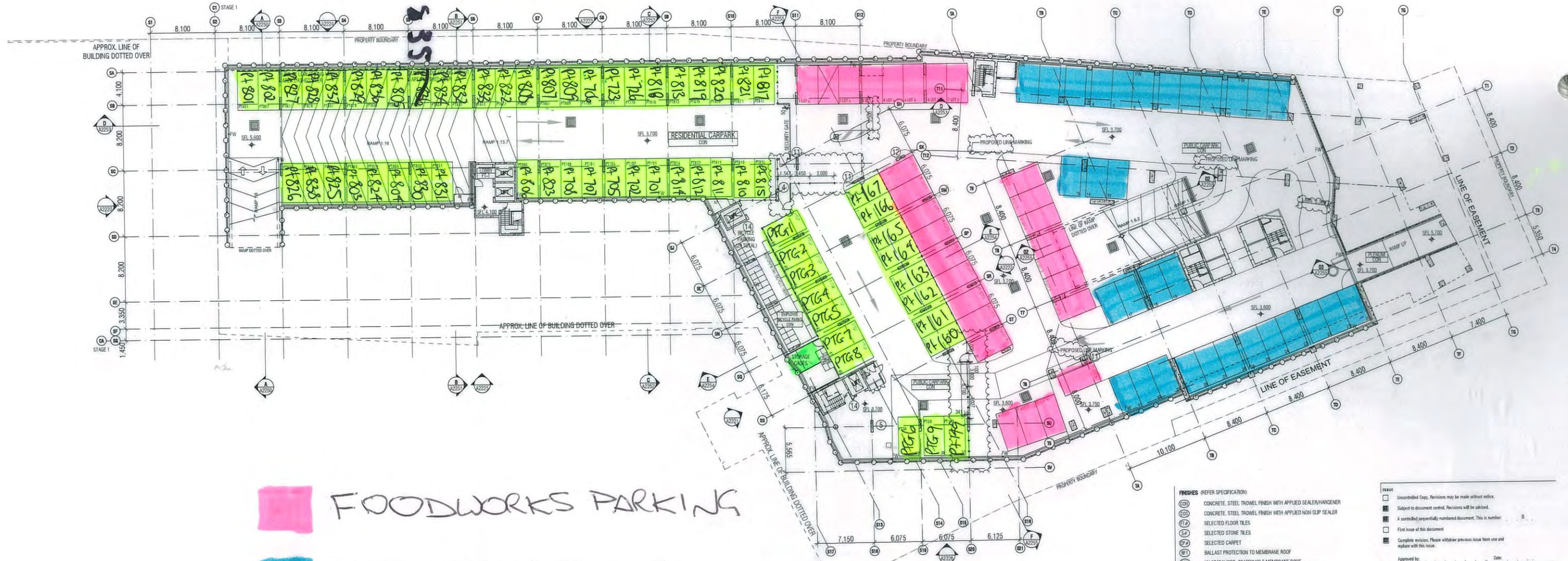


# SIENNA CAR PARKING

LEVEL: BASEMENT

| REVISION | DESCRIPTION                     | DATE       |
|----------|---------------------------------|------------|
| P1       | PRELIMINARY INFORMATION         | 18.08.2009 |
| P2       | PRELIMINARY CLIENT ISSUE        | 18.08.2009 |
| P3       | PRELIMINARY CO ISSUE            | 18.08.2009 |
| P4       | STAGE 1 BUILDING PERMIT ISSUE   | 18.08.2009 |
| P5       | PRELIMINARY INFORMATION         | 18.08.2009 |
| P6       | PRELIMINARY INFORMATION         | 18.08.2009 |
| A        | CONSTRUCTION ISSUE              | 18.08.2009 |
| B        | GENERAL UPDATE                  | 18.08.2009 |
| C        | GENERAL UPDATE                  | 18.08.2009 |
| D        | 11 APARTMENT CONSTRUCTION ISSUE | 18.08.2010 |
| E        | CAR PARKING REARRANGED          | 18.08.2010 |



- FOODWORKS PARKING
- VISITOR PARKING
- UNIT PARKING
- STORAGE CAGES

- FINISHES (REFER SPECIFICATION)**
- (C20) CONCRETE, STEEL TROWEL FINISH WITH APPLIED SEALER/HARDENER
  - (C25) CONCRETE, STEEL TROWEL FINISH WITH APPLIED NON-SLIP SEALER
  - (F1) SELECTED FLOOR TILES
  - (F2) SELECTED STONE TILES
  - (F3) SELECTED CARPET
  - (F4) BALLAST PROTECTION TO MEMBRANE ROOF
  - (F5) LV STABILISED, TRAFFICABLE MEMBRANE ROOF
  - (M1) BALUSTRADE TYPE, PARAPET TYPE - REFER DRAWING A240
  - (M2) METAL SCREEN TYPE
  - (M3) TIMBER SCREEN TYPE
  - (M4) LOUVER SCREEN TYPE

**NOTES:**

- (1) REFERS TO FLOOR LEVEL
- (2) REFERS TO DOOR NUMBER

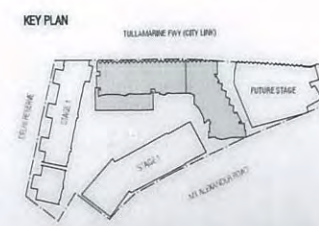
REFER TO DOOR SCHEDULE FOR INDIVIDUAL DOOR HARDWARE DETAILS. REFER TO A2420 FOR GENERAL DOOR TYPE ELEVATIONS.

REFER TO DRWGS A2300 SERIES FOR SETOUT OF COLUMNS, SLABS, UPSTANDS, LOAD BEARING WALLS & THE LIKE

REFER TO DRWGS A2700 SERIES FOR SETOUT OF APARTMENT FITOUT

ALL PARTY & COMMON WALL DIMENSIONS ARE TO FINISHED FACE OF WALL LININGS. REFER TO DRWG A2020 FOR WALL CONSTRUCTION

- GENERAL LEGEND**
- STUD WALL
  - INSITU CONCRETE
  - PRECAST CONCRETE
  - BLOCKWORK
  - FIRE RATED STUD WALL
  - FIRE HOSE REEL
  - FIRE HYDRANT
  - FIRE EXTINGUISHER
  - FLOOR WASTE
  - DOWNPIPE, SEWER STACK, RELIEF VENT, SUCTION POINT, FIRE SERVICES, EXHAUST VENT OVERFLOW
  - REFER ENG DRWGS & SPEC FOR TYPES
  - ROOF SLUMP / STORMWATER SLUMP
  - LEVELS: SFL - STRUCTURAL FLOOR LEVEL
  - PL - FINISHED FINING LEVEL
  - FEL - FINISHED FLOOR LEVEL
  - CJ, MJ, PJ - CONSTRUCTION JOINT, MOVEMENT JOINT, PANEL JOINT, DAMBAY JOINT
  - SERVICES RISER - REFER ENG DRWGS FOR ALL SERVICES
  - WALL TYPE TAG - REFER DRWG A2020



**ISSUE**

- Uncontrolled Copy. Revisions may be made without notice.
- Subject to document control. Revisions will be advised.
- A controlled, sequentially numbered document. This is number: B
- First issue of this document
- Complete revision. Please withdraw previous issue from site and replace with this issue.

Approved by: \_\_\_\_\_ Date: \_\_\_\_\_

**NOTES**

Check and verify all dimensions prior to commencement of work. This drawing shall be read in conjunction with all other contract documents including those by other consultants, and including specifications. Check identification of nomenclature symbols.

Figured dimensions shall take precedence to scaled dimensions.

This drawing is COPYRIGHT and shall remain the property of FENDER KATSAIDIS (AUSTRALIA) PTY LTD

**SCALE**

1:200@B1

| DRAWN | DATE     | CHECKED | PLAT DATE  | JOB NO. |
|-------|----------|---------|------------|---------|
| CJ    | 15.04.10 | JP      | 20/06/2010 | 04128   |

**DRAWING TITLE**

GENERAL ARRANGEMENT PLAN  
BASEMENT LEVEL

**PROJECT**

BENSONS  
MT ALEXANDER ROAD  
TRAVANCORE STAGE 2

**FENDER KATSAIDIS Architects**

70 CITY ROAD SOUTHEAST  
3008 VICTORIA AUSTRALIA  
TEL: 3 8888 3008  
TEL: 3 8888 3008  
FACSIMILE

REVISION: DRAWING NO. \_\_\_\_\_

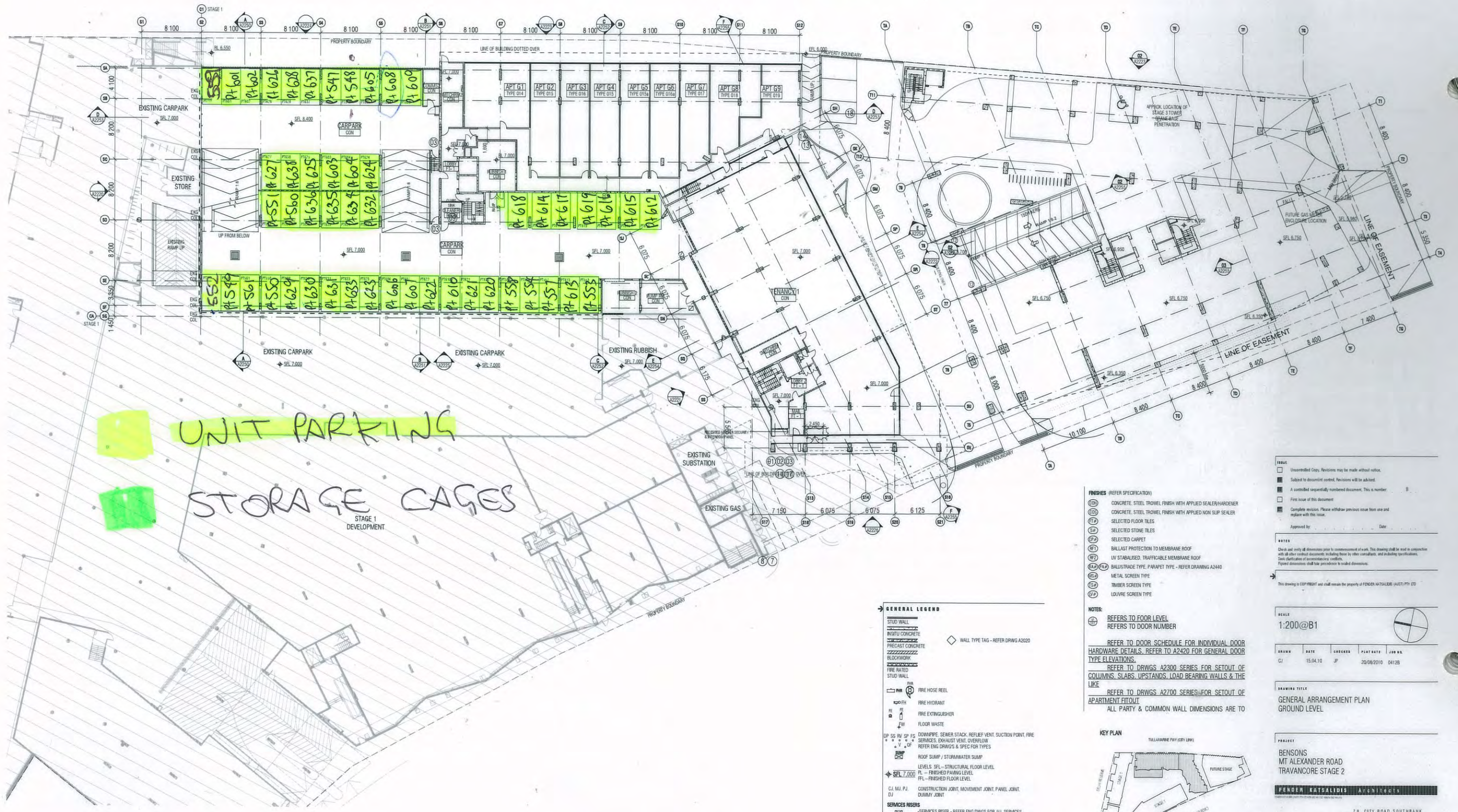
E FOR CONSTRUCTION

A2050

# SIENNA CAR PARKING

LEVEL: GROUND FLOOR

| REVISION | DESCRIPTION                     | DATE       |
|----------|---------------------------------|------------|
| P1       | PRELIMINARY INFORMATION         | 08.08.2009 |
| P2       | PRELIMINARY CLIENT ISSUE        | 08.08.2009 |
| P3       | PRELIMINARY CLIENT ISSUE        | 04.10.2009 |
| P4       | STAGE 1 BUILDING PERMIT ISSUE   | 27.08.2009 |
| P5       | PRELIMINARY INFORMATION         | 21.12.2009 |
| A        | CONSTRUCTION ISSUE              | 28.01.2010 |
| B        | GENERAL UPDATE                  | 18.04.2010 |
| C        | GENERAL UPDATE                  | 18.04.2010 |
| D        | 18 APARTMENT CONSTRUCTION ISSUE | 15.04.2010 |



UNIT PARKING

STORAGE CAGES

- GENERAL LEGEND**
- STUD WALL
  - INSITU CONCRETE
  - PRECAST CONCRETE
  - BLOCKWORK
  - FIRE RATED STUD WALL
  - FIRE HOSE REEL
  - FIRE HYDRANT
  - FIRE EXTINGUISHER
  - FLOOR WASTE
  - DOWNPIPE, SEWER STACK, REFLEX VENT, SUCTION POINT, FIRE SERVICES, EXHAUST VENT, OVERFLOW
  - REFER ENG DRWS & SPEC FOR TYPES
  - ROOF SUMP / STORMWATER SUMP
  - LEVELS: SPL - STRUCTURAL FLOOR LEVEL
  - FL - FINISHED FLOOR LEVEL
  - FFL - FINISHED FLOOR LEVEL
  - CONSTRUCTION JOINT, MOVEMENT JOINT, PANEL JOINT, DUMMY JOINT
  - SERVICES RISERS
  - SERVICES RISER - REFER ENG DRWS FOR ALL SERVICES
  - WALL TYPE TAG - REFER DRWG A2020

- FINISHES (REFER SPECIFICATION)**
- CONCRETE, STEEL TROWEL FINISH WITH APPLIED SEALER/HARDENER
  - CONCRETE, STEEL TROWEL FINISH WITH APPLIED NON SLIP SEALER
  - SELECTED FLOOR TILES
  - SELECTED STONE TILES
  - SELECTED CARPET
  - BALLAST PROTECTION TO MEMBRANE ROOF
  - UV STABILISED, TRAFFICABLE MEMBRANE ROOF
  - BALLUSTRADE TYPE, PARAPET TYPE - REFER DRAWING A2440
  - METAL SCREEN TYPE
  - TIMBER SCREEN TYPE
  - LOUVRE SCREEN TYPE

**NOTES:**

- REFERS TO FLOOR LEVEL
- REFERS TO DOOR NUMBER
- REFER TO DOOR SCHEDULE FOR INDIVIDUAL DOOR HARDWARE DETAILS. REFER TO A2420 FOR GENERAL DOOR TYPE ELEVATIONS.
- REFER TO DRWS A2300 SERIES FOR SETOUT OF COLUMNS, SLABS, UPSTANDS, LOAD BEARING WALLS & THE LIKE
- REFER TO DRWS A2700 SERIES FOR SETOUT OF APARTMENT FITOUT
- ALL PARTY & COMMON WALL DIMENSIONS ARE TO



**ISSUE**

- Uncontrolled Copy. Revisions may be made without notice.
- Subject to document control. Revisions will be advised.
- A controlled sequentially numbered document. This is number.
- First issue of this document.
- Complete revision. Please withdraw previous issue from use and replace with this issue.

Approved by: \_\_\_\_\_ Date: \_\_\_\_\_

**NOTES**

Check and verify all dimensions prior to commencement of work. This drawing shall be read in conjunction with all other control documents including those by other consultants, and including specifications. Seek clarification of any uncertainty or conflict. Figure dimensions shall take precedence to word dimensions.

This drawing is COPRIGHT and shall remain the property of FENDER KATSAIDIS (AUST) PTY LTD

**SCALE**

1:200@B1

| DRAWN | DATE     | CHECKED | PLotted    | JOB NO. |
|-------|----------|---------|------------|---------|
| CJ    | 15.04.10 | JF      | 20/04/2010 | 0412B   |

**DRAWING TITLE**

GENERAL ARRANGEMENT PLAN  
GROUND LEVEL

**PROJECT**

BENSONS  
MT ALEXANDER ROAD  
TRAVANCOR STAGE 2

**FENDER KATSAIDIS Architects**

78 CITY ROAD SOUTHBRK  
3805 VICTORIA AUSTRALIA  
61 3 8881 3888 TELEPHONE  
61 3 8882 8828 FACSIMILE

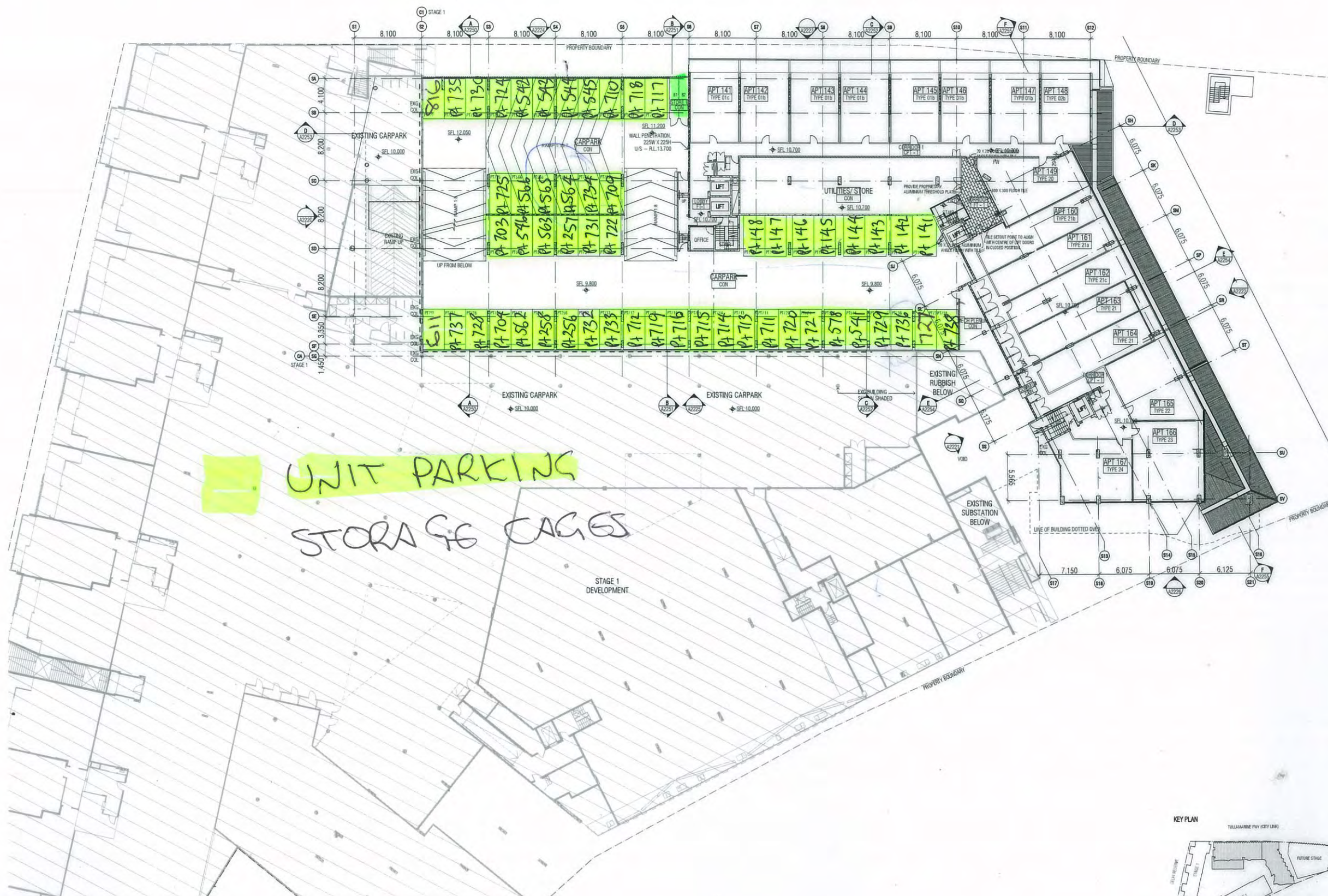
REVISION DRAWING BY: \_\_\_\_\_

FOR CONSTRUCTION

A2051

# SIENNA CAR PARKING

LEVEL ONE



UNIT PARKING  
STORAGE CAGES

| REVISION | DESCRIPTION                     | DATE       |
|----------|---------------------------------|------------|
| P1       | PRELIMINARY INFORMATION         | 08.04.2008 |
| P2       | PRELIMINARY CLIENT ISSUE        | 06.09.2008 |
| P3       | PRELIMINARY CLIENT ISSUE        | 06.10.2008 |
| P4       | PRELIMINARY INFORMATION         | 21.11.2008 |
| P5       | PRELIMINARY INFORMATION         | 15.12.2008 |
| A        | CONSTRUCTION ISSUE              | 30.01.2009 |
| B        | GENERAL UPDATE                  | 19.04.2009 |
| C        | GENERAL UPDATE                  | 01.04.2010 |
| D        | 10 APARTMENT CONSTRUCTION ISSUE | 15.04.2010 |

- GENERAL LEGEND**
- STUD WALL
  - IN-SITU CONCRETE
  - PRECAST CONCRETE
  - BLOCKWORK
  - FIRE RATED STUD WALL
  - FIRE HOSE REEL
  - FIRE HYDRANT
  - FIRE EXTINGUISHER
  - FLOOR WASTE
  - DOWNPIPE, SEWER STACK, RELIEF VENT, SUCTION POINT, FIRE SERVICES, EXHAUST VENT, OVERFLOW
  - REFER ENG DRWGS & SPEC FOR TYPES
  - ROOF SUMP / STORMWATER SUMP
  - LEVELS: SPL - STRUCTURAL FLOOR LEVEL
  - FL - FINISHED FLOOR LEVEL
  - FFL - FINISHED FLOOR LEVEL
  - CONSTRUCTION JOINT, MOVEMENT JOINT, PANEL JOINT, DUMMY JOINT
  - SERVICES RISERS
  - SERVICES RISER - REFER ENG DRWGS FOR ALL SERVICES
- FINISHES (REFER SPECIFICATION)**
- CONCRETE, STEEL, IRONMEL FINISH WITH APPLIED SEALER/HARDENER
  - CONCRETE, STEEL, IRONMEL FINISH WITH APPLIED NON-SLIP SEALER
  - SELECTED FLOOR TILES
  - SELECTED STONE TILES
  - SELECTED CARPET
  - BALLAST PROTECTION TO MEMBRANE ROOF
  - UV STABILISED, TRAFFICABLE MEMBRANE ROOF
  - BALUSTRADE TYPE, PARAPET TYPE - REFER DRAWING A2440
  - METAL SCREEN TYPE
  - TIMBER SCREEN TYPE
  - LOUVER SCREEN TYPE

**NOTES:**

- REFERS TO FLOOR LEVEL
- REFERS TO DOOR NUMBER
- REFER TO DOOR SCHEDULE FOR INDIVIDUAL DOOR HARDWARE DETAILS. REFER TO A2420 FOR GENERAL DOOR TYPE ELEVATIONS.
- REFER TO DRWGS A2300 SERIES FOR SETOUT OF COLUMNS, SLABS, UPSTANDS, LOAD BEARING WALLS & THE LIKE
- REFER TO DRWGS A2700 SERIES FOR SETOUT OF APARTMENT FITOUT
- ALL PARTY & COMMON WALL DIMENSIONS ARE TO FINISHED FACE OF WALL LININGS. REFER TO DRWG A2020 FOR WALL CONSTRUCTION

Uncontrolled Copy. Revisions may be made without notice.  
 Subject to document control. Revisions will be advised.  
 A controlled sequentially numbered document. This is number: B  
 First issue of this document  
 Complete revision. Please withdraw previous issue from use and replace with this issue.  
 Approved by: \_\_\_\_\_ Date: \_\_\_\_\_

**NOTES:**

Check and verify all dimensions prior to commencement of work. This drawing shall be read in conjunction with all other contract documents including those by other consultants, and including specifications.  
 Check distribution of measurements, conditions.  
 Figure dimensions shall take precedence to verbal dimensions.

This drawing is COPYRIGHT and shall remain the property of FENDER KATCALOIS (AUSTR) PTY LTD

SCALE: 1:200@B1

| DRAWN | DATE     | CHECKED | PLT DATE   | JOB NO. |
|-------|----------|---------|------------|---------|
| CU    | 15.04.10 | JP      | 20/08/2010 | 04126   |

DRAWING TITLE: GENERAL ARRANGEMENT PLAN LEVEL 1

PROJECT: BENSONS MT ALEXANDER ROAD TRAVANCORE STAGE 2

FENDER KATCALOIS Architects

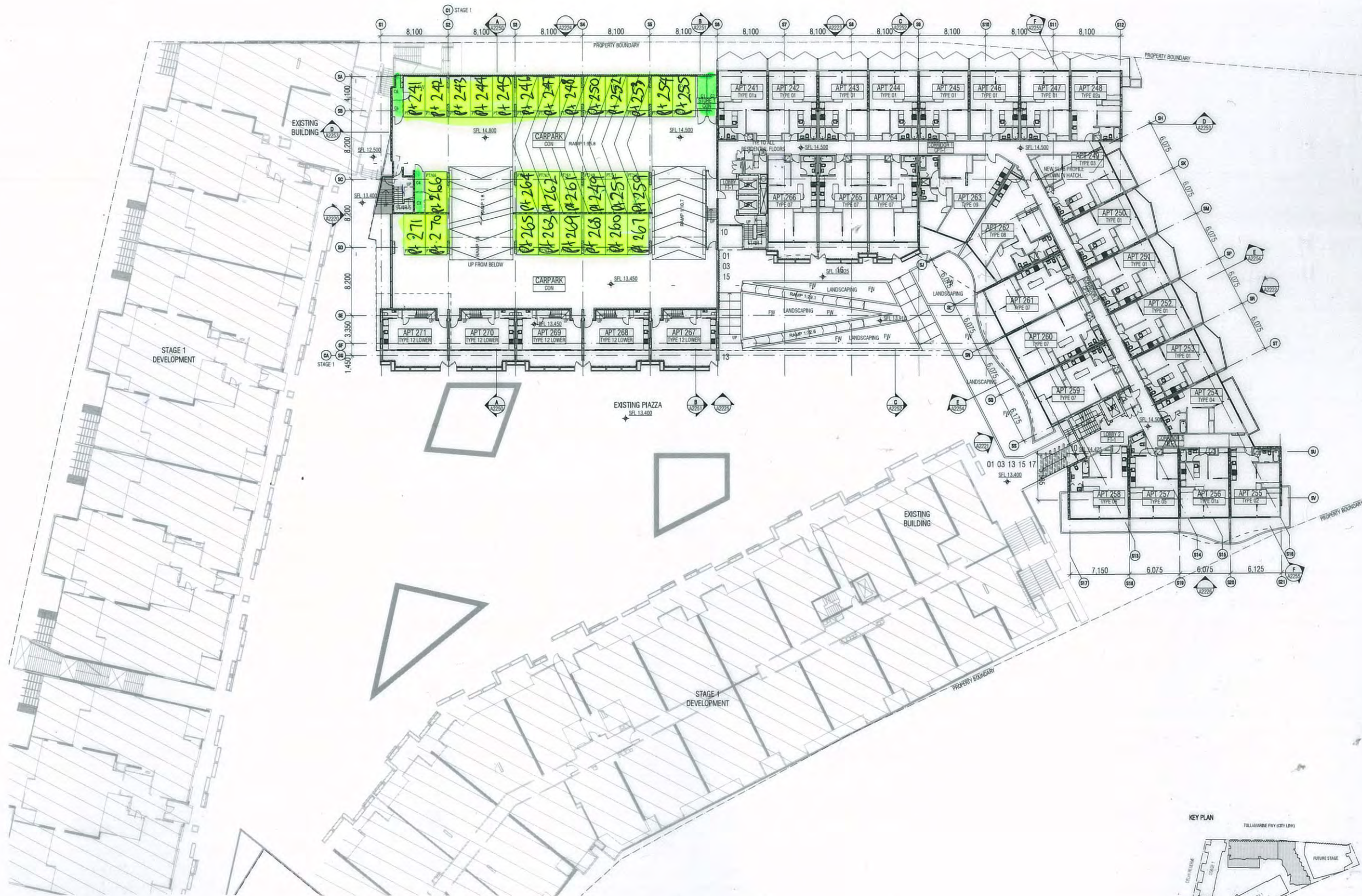
70 CITY ROAD SOUTHBANK  
 3000 VICTORIA AUSTRALIA  
 61 3 9000 3000 TELEPHONE  
 61 3 9002 0025 FACSIMILE

REVISION DRAWING NO. D FOR CONSTRUCTION

A2052

# SIENNA CAR PARKING

## LEVEL TWO



### GENERAL LEGEND

- STUD WALL
- INSITU CONCRETE
- PRECAST CONCRETE
- BLOCKWORK
- FIRE RATED STUD WALL
- FIRE HOSE REEL
- FIRE HYDRANT
- FIRE EXTINGUISHER
- FLOOR WASTE
- DOWNPIPE, SEWER STACK, REFLECT VENT, SUCTION POINT, FIRE SERVICES, EXHAUST VENT, OVERFLOW
- LEVELS: SFL - STRUCTURAL FLOOR LEVEL
- FLL - FINISHED FLOOR LEVEL
- CONSTRUCTION JOINT, MOVEMENT JOINT, PANEL JOINT, DUMMY JOINT
- SERVICES RISERS - SERVICES RISER - REFER ENG DWGS FOR ALL SERVICES
- FINISHES (REFER SPECIFICATION)
- CONCRETE, STEEL TROWEL FINISH WITH APPLIED SEALER/HARDENER
- CONCRETE, STEEL TROWEL FINISH WITH APPLIED NON SLIP SEALER
- SELECTED FLOOR TILES
- SELECTED STONE TILES
- SELECTED CARPET
- BALLAST PROTECTION TO MEMBRANE ROOF
- UV STABILISED TRAFFICABLE MEMBRANE ROOF
- BALUSTRADE TYPE, PARAPET TYPE - REFER DRAWING A2340
- METAL SCREEN TYPE
- TIMBER SCREEN TYPE
- LOUVER SCREEN TYPE

**NOTES:**

- REFERS TO FLOOR LEVEL
- REFERS TO DOOR NUMBER
- REFER TO DOOR SCHEDULE FOR INDIVIDUAL DOOR HARDWARE DETAILS. REFER TO A2420 FOR GENERAL DOOR TYPE ELEVATIONS.
- REFER TO DWGS A2300 SERIES FOR SETOUT OF COLUMNS, SLABS, UPSTANDS, LOAD BEARING WALLS & THE LIKE
- REFER TO DWGS A2700 SERIES FOR SETOUT OF APARTMENT FITOUT
- ALL PARTY & COMMON WALL DIMENSIONS ARE TO

**REVISIONS:**

- Uncontrolled Copy. Revisions may be made without notice.
- Subject to document control. Revisions will be advised.
- A controlled sequentially numbered document. This is number 1.
- First issue of this document.
- Complete revision. Please withdraw previous issue from use and replace with this issue.

Approved by: \_\_\_\_\_ Date: \_\_\_\_\_

**NOTES:**

Check and verify all dimensions prior to commencement of work. This drawing shall be read in conjunction with all other contract documents, including those by other consultants, and including specifications. Fixing dimensions shall take precedence to scaled dimensions.

This drawing is COPYRIGHT and shall remain the property of FENDER KATSALIDIS (AUSTRALIA) PTY LTD

**SCALE:** 1:200@B1

| DRAWN | DATE     | CHECKED | PLAT DATE  | JOB NO. |
|-------|----------|---------|------------|---------|
| CJ    | 15.05.09 | JP      | 20/06/2010 | 04128   |

**DRAWING TITLE:** GENERAL ARRANGEMENT PLAN LEVEL 2

**PROJECT:** BENSONS MT ALEXANDER ROAD TRAVANCORE STAGE 2

**FENDER KATSALIDIS Architects**

70 CITY ROAD SOUTH BANK  
3008 VICTORIA AUSTRALIA  
03 9400 3000 TELEPHONE  
03 9402 5025 FACSIMILE

**REVISION:** DRAWING NO. B FOR CONSTRUCTION **A2053**



# SIENNA CAR PARKING

## LEVEL THREE

| REVISION | DATE                                |
|----------|-------------------------------------|
| PS       | PRELIMINARY INFORMATION 08.08.2009  |
| PS       | PRELIMINARY CLIENT ISSUE 08.29.2009 |
| PS       | PRELIMINARY ISSUE 08.30.2009        |
| PS       | PRELIMINARY INFORMATION 11.11.2009  |
| PS       | PRELIMINARY INFORMATION 18.12.2009  |
| A        | CONSTRUCTION ISSUE 30.01.2010       |
| B        | GENERAL UPDATE 04.06.2010           |

**GENERAL LEGEND**

|  |                                 |
|--|---------------------------------|
| STUD WALL  | WALL TYPE TAG - REFER DRWG A200 |
| INITU CONCRETE   |                                 |
| PRECAST CONCRETE   |                                 |
| BLOCKWORK  |                                 |
| FIRE RATED STUD WALL   |                                 |
| FIRE HOSE REEL   |                                 |
| FIRE HYDRANT   |                                 |
| FIRE EXTINGUISHER  |                                 |
| FLOOR WASTE  |                                 |
| DOWNSPIPE, SEWER STACK, REFLEX VENT, SUCTION POINT, FIRE SERVICES, EXHAUST VENT, OVERFLOW, REFER ENG DWGS & SPEC FOR TYPES |                                 |
| ROOF SUMP / STORMWATER SUMP  |                                 |
| LEVELS: SPL - STRUCTURAL FLOOR LEVEL, FL - FINISHED FLOOR LEVEL, FFL - FINISHED FLOOR LEVEL                                |                                 |
| CONSTRUCTION JOINT, MOVEMENT JOINT, PANEL JOINT, DUMMY JOINT   |                                 |
| SERVICES RISERS - SERVICES RISER - REFER ENG DWGS FOR ALL SERVICES   |                                 |

**FINISHES (REFER SPECIFICATION)**

- CONCRETE, STEEL TROMEL FINISH WITH APPLIED SEALER/HARDENER
- CONCRETE, STEEL TROMEL FINISH WITH APPLIED NON SLIP SEALER
- SELECTED FLOOR TILES
- SELECTED STONE TILES
- SELECTED CARPET
- BALLAST PROTECTION TO MEMBRANE ROOF
- UN STABILISED, TRAFFICABLE MEMBRANE ROOF
- BALUSTRADE TYPE, PARAPET TYPE - REFER DRAWING A344
- METAL SCREEN TYPE
- TIMBER SCREEN TYPE
- LOUVE SCREEN TYPE

**NOTES:**

- REFERS TO FLOOR LEVEL
- REFERS TO DOOR NUMBER
- REFER TO DOOR SCHEDULE FOR INDIVIDUAL DOOR HARDWARE DETAILS. REFER TO A2420 FOR GENERAL DOOR TYPE ELEVATIONS.
- REFER TO DRWGS A2300 SERIES FOR SETOUT OF COLUMNS, SLABS, UPSTANDS, LOAD BEARING WALLS & THE LIKE
- REFER TO DRWGS A2700 SERIES FOR SETOUT OF APARTMENT FITOUT
- ALL PARTY & COMMON WALL DIMENSIONS ARE TO

**ISSUE**

|                          |   |
|--------------------------|---|
| <input type="checkbox"/> | Uncontrolled Copy. Revisions may be made without notice.                                |
| <input type="checkbox"/> | Subject to document control. Revisions will be advised.                                 |
| <input type="checkbox"/> | A controlled sequentially numbered document. This is number B.                          |
| <input type="checkbox"/> | First issue of this document.   |
| <input type="checkbox"/> | Complete revision. Please withdraw previous issue from use and replace with this issue. |

Approved by: \_\_\_\_\_ Date: \_\_\_\_\_

**NOTES**

Check and verify all dimensions prior to commencement of work. This drawing shall be read in conjunction with all other contract documents including those by other consultants, and including specifications. Such distribution of responsibility remains.

Figured dimensions shall take precedence to scaled dimensions.

This drawing is COPYRIGHT and shall remain the property of FENDER KATZALIDIS (AUSTRALIA) PTY LTD

**SCALE**  
1:200@B1

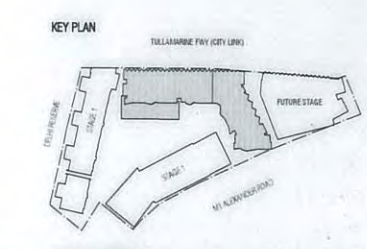
| DRAWN | DATE     | CHECKED | PLAT DATE  | JOB NO. |
|-------|----------|---------|------------|---------|
| CJ    | 15.06.09 | JP      | 20/08/2010 | 04128   |

**DRAWING TITLE**  
GENERAL ARRANGEMENT PLAN  
LEVEL 3

**PROJECT**  
BENSONS  
MT ALEXANDER ROAD  
TRAVANCORE STAGE 2

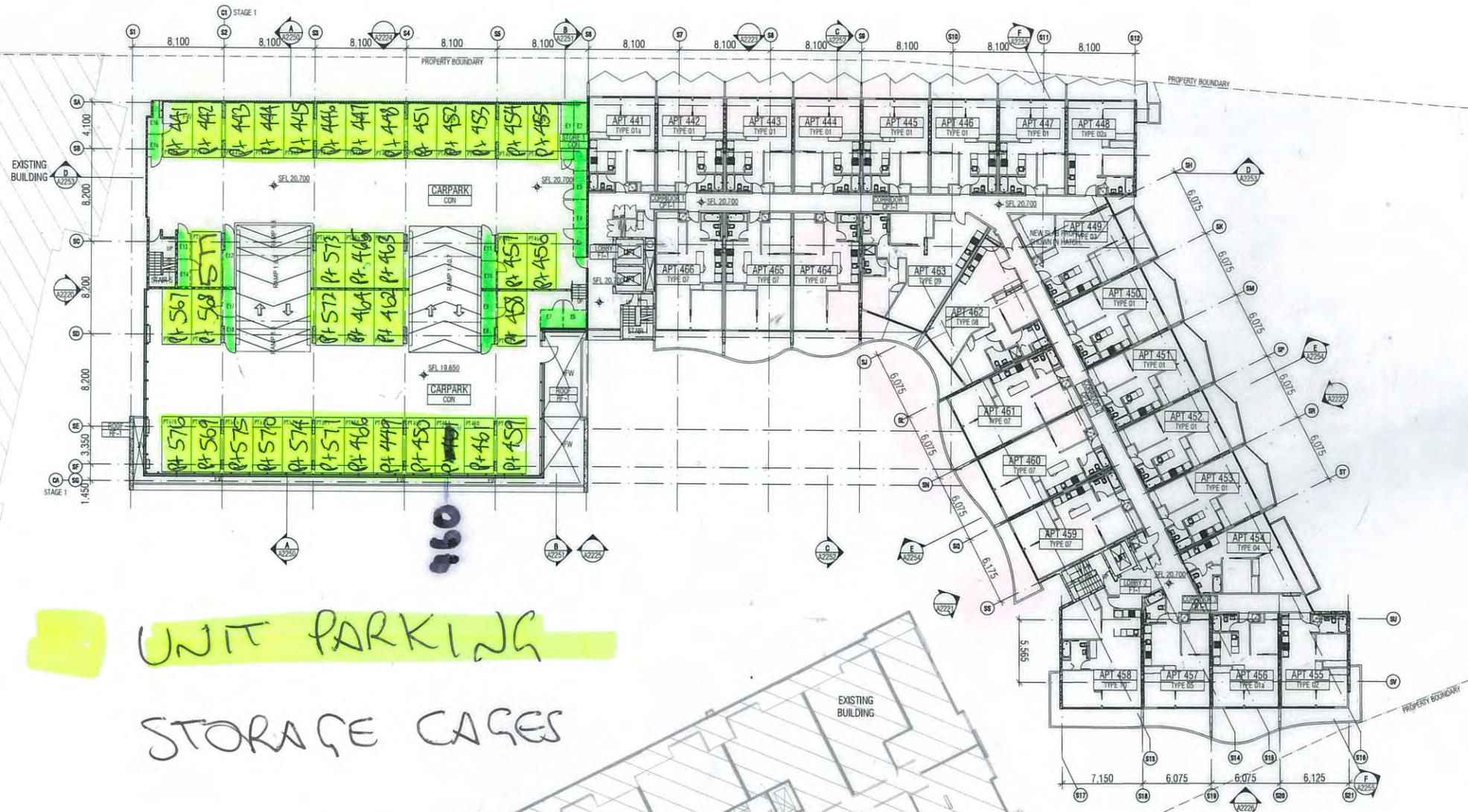
**FENDER KATZALIDIS ARCHITECTS**  
70 CITY ROAD SOUTHBRANK  
3008 VICTORIA AUSTRALIA  
61 3 8000 3000 TELEPHONE  
61 3 8002 0020 FACSIMILE

REVISION: DRAWING NO. B FOR CONSTRUCTION A2054



# SIENNA CAR PARKING

## LEVEL FOUR



UNIT PARKING

STORAGE CAGES

| REVISION | DATE       | DESCRIPTION              |
|----------|------------|--------------------------|
| PT       | 16.08.2009 | PRELIMINARY INFORMATION  |
| PT       | 16.08.2009 | PRELIMINARY CLIENT ISSUE |
| PT       | 16.08.2009 | PRELIMINARY CLIENT ISSUE |
| PT       | 16.08.2009 | PRELIMINARY INFORMATION  |
| PT       | 16.08.2009 | PRELIMINARY INFORMATION  |
| A        | 16.08.2009 | CONSTRUCTION ISSUE       |
| B        | 16.08.2009 | GENERAL UPDATE           |

- GENERAL LEGEND**
- STUD WALL
  - WETU CONCRETE
  - PRECAST CONCRETE
  - BLICKSTON
  - FIRE RATED STUD WALL
  - FIRE HOSE REEL
  - FIRE HYDRANT
  - FIRE EXTINGUISHER
  - FLOOR WASTE
  - DOWNPIPE, SEWER STACK, RELIEF VENT, SUCTION POINT, FIRE SERVICES, EXHAUST VENT, OVERFLOW
  - REFER ENG DRAWGS & SPEC FOR TYPES
  - ROOF SLUMP / STORMWATER SLUMP
  - LEVELS: SFL - STRUCTURAL FLOOR LEVEL
  - PL - FINISHED PAVING LEVEL
  - FFL - FINISHED FLOOR LEVEL
  - CONSTRUCTION JOINT, MOVEMENT JOINT, PANEL JOINT, DUMMY JOINT
  - SERVICES RISERS
  - SERVICES RISER - REFER ENG DRAWGS FOR ALL SERVICES
- FINISHES (REFER SPECIFICATION)**
- CONCRETE, STEEL TROWEL FINISH WITH APPLIED SEALER/HARDENER
  - CONCRETE, STEEL TROWEL FINISH WITH APPLIED NON SLIP SEALER
  - SELECTED FLOOR TILES
  - SELECTED STONE TILES
  - SELECTED CARPET
  - BALLAST PROTECTION TO MEMBRANE ROOF
  - UV STABILISED, TRAFFICABLE MEMBRANE ROOF
  - BALUSTRADE TYPE, PARAPET TYPE - REFER DRAWING A2340
  - METAL SCREEN TYPE
  - TIMBER SCREEN TYPE
  - LOUVRE SCREEN TYPE

**NOTES:**

- REFERS TO FLOOR LEVEL
- REFERS TO DOOR NUMBER
- REFER TO DOOR SCHEDULE FOR INDIVIDUAL DOOR HARDWARE DETAILS. REFER TO A2420 FOR GENERAL DOOR TYPE ELEVATIONS.
- REFER TO DRAWGS A2300 SERIES FOR SETOUT OF COLUMNS, SLABS, UPSTANDS, LOAD BEARING WALLS & THE LIKE
- REFER TO DRAWGS A2700 SERIES FOR SETOUT OF APARTMENT FITOUT
- ALL PARTY & COMMON WALL DIMENSIONS ARE TO

- ISSUE**
- Uncontrolled Copy. Revisions may be made without notice.
  - Subject to document control. Revisions will be advised.
  - A controlled sequentially numbered document. This is number
  - First issue of this document
  - Complete revision. Please withdraw previous issue from use and replace with this issue.
- Approved by: \_\_\_\_\_ Date: \_\_\_\_\_

**NOTES**

Check and verify all dimensions prior to commencement of work. This drawing shall be read in conjunction with all other contract documents, including those by other consultants, and including specifications. Seek clarification of any inconsistency immediately.

Figured dimensions shall take precedence to scaled dimensions.

This drawing is COPYRIGHT and shall remain the property of FENDER KATSALIDIS (AUSTR) PTY LTD

**SCALE**  
1:200@B1

| DRAWN | DATE     | CHECKED | PLAT DATE  | JOB NO. |
|-------|----------|---------|------------|---------|
| CJ    | 15.06.09 | JP      | 20/06/2010 | 04128   |

**DRAWING TITLE**  
GENERAL ARRANGEMENT PLAN  
LEVEL 4

**PROJECT**  
BENSONS  
MT ALEXANDER ROAD  
TRAVANCORE STAGE 2

**FENDER KATSALIDIS Architects**  
70 CITY ROAD SOUTHBANK  
3008 VICTORIA AUSTRALIA  
61 3 8888 3888 TELEPHONE  
61 3 8882 5825 FACSIMILE

REVISION: DRAWING NO. B FOR CONSTRUCTION A2055

